

# AIS-based Collision Avoidance Behaviour Assessment

Summary of Report created @ 2025-06-04 16:04:17

<b>MMSI-No:</b>	212848000
<b>Ship Name:</b>	WESER STAHL
<b>Investigated Time:</b>	05.01.2023 – 27.12.2023

Applicable COLREG	My Obligation		Total
	16 Stand-On	17 Give-Way	
13 Overtaking	93	19	112
14 Head-on	0	0	0
15 Crossing	7	1	8
18 Special Circumstances	0	0	0
COLREGs-Encounters in total:			120

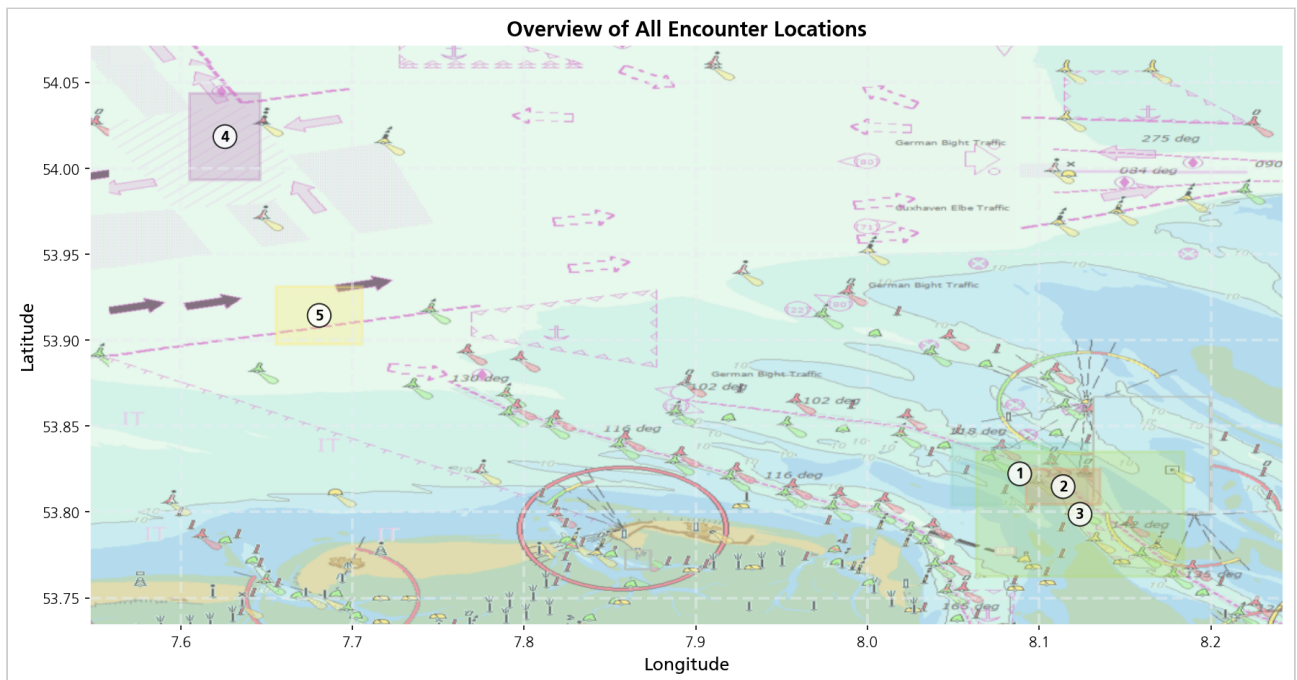
Own Ship Fault encounters: 0

Target Ship Fault encounters: 5

Total Non-compliant encounters: 5

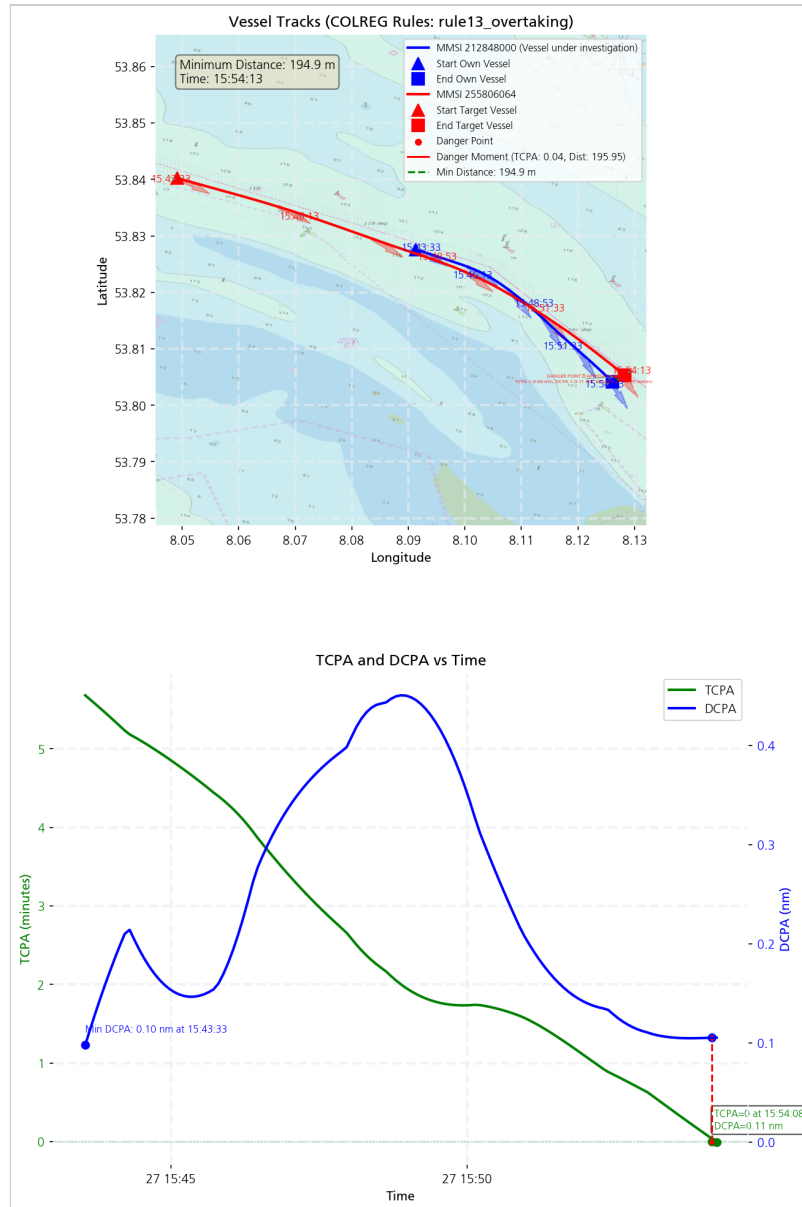
Near Misses: 0

## Overview of Encounter Locations



## Target Ship Fault Encounters

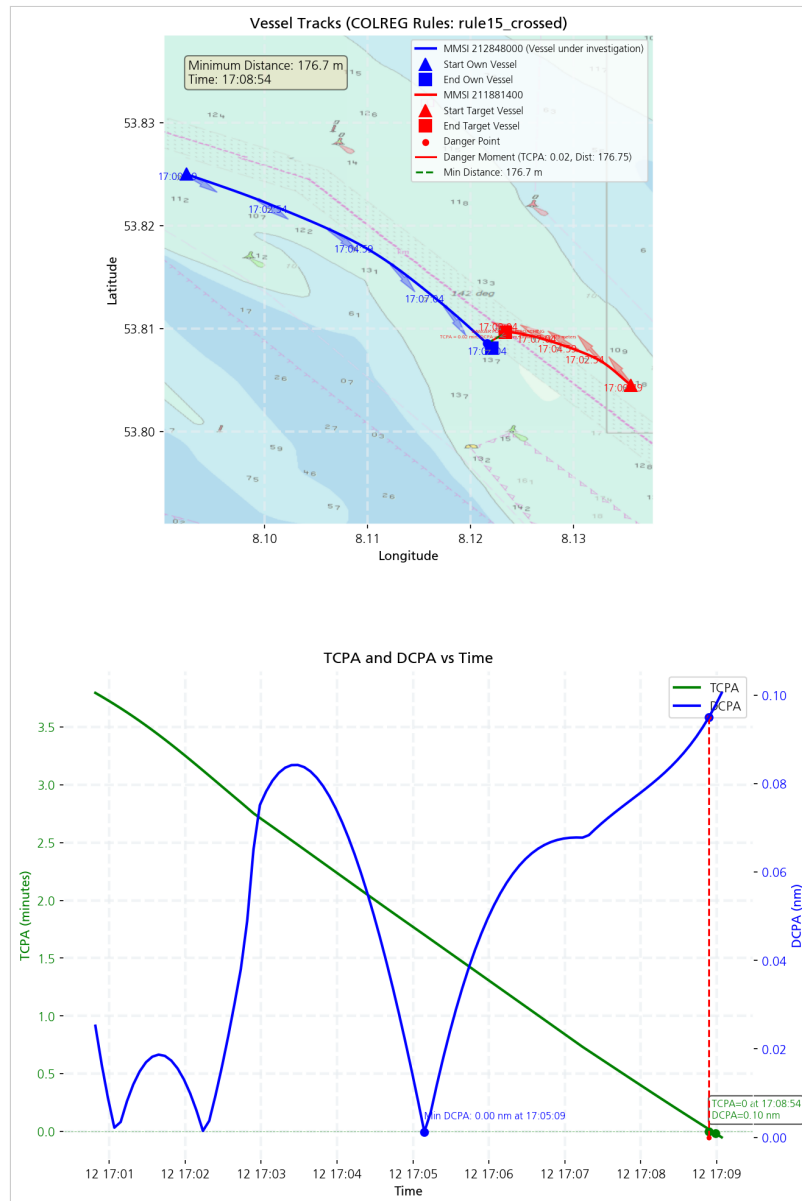
## Non-compliant Encounter #1 (Target Ship Fault)



<b>Date:</b>	212848000_2023-06-27 - 15:43
<b>Involved vessel:</b>	MMSI - 255806064, Name AS PETRONIA
<b>Applicable COLREG:</b>	rule 13
<b>Our Obligation:</b>	Our role was stand-on
<b>Type of breach:</b>	rule 13 violation: Overtaking vessel cannot maintain a good distance (>300m) during overtaking maneuver
<b>Fault Assignment:</b>	Target Ship

## Target Ship Fault Encounters

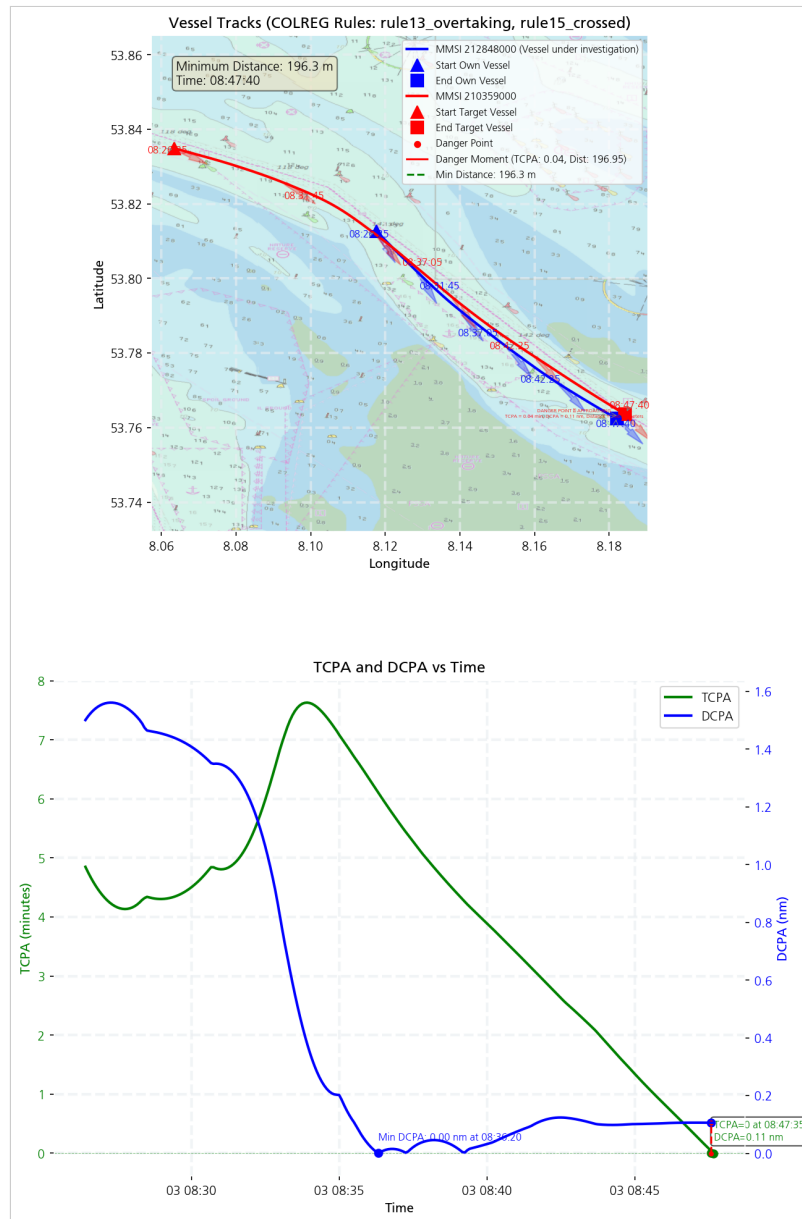
### Non-compliant Encounter #2 (Target Ship Fault)



<b>Date:</b>	212848000_2023-06-12 – 17:00
<b>Involved vessel:</b>	MMSI - 211881400, Name CELERIUS
<b>Applicable COLREG:</b>	rule 15
<b>Our Obligation:</b>	Our role was stand-on
<b>Type of breach:</b>	rule 15 violation: Give-way vessel passing astern too closely
<b>Fault Assignment:</b>	Target Ship

## Target Ship Fault Encounters

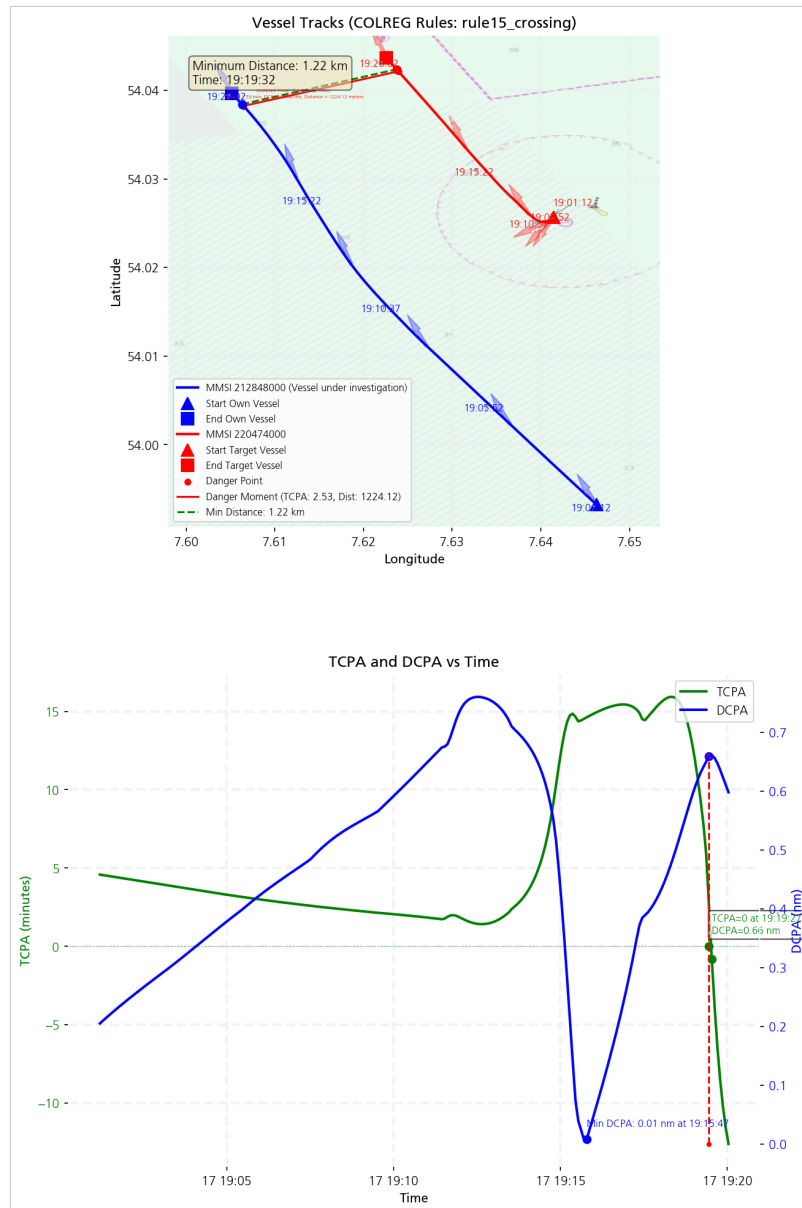
### Non-compliant Encounter #3 (Target Ship Fault)



<b>Date:</b>	212848000_2023-05-03 – 08:26
<b>Involved vessel:</b>	MMSI - 210359000, Name ELBWATER
<b>Applicable COLREG:</b>	rule 13
<b>Our Obligation:</b>	Our role was stand-on
<b>Type of breach:</b>	rule 13 violation: Overtaking vessel cannot maintain a good distance (>300m) during overtaking maneuver
<b>Fault Assignment:</b>	Target Ship

## Target Ship Fault Encounters

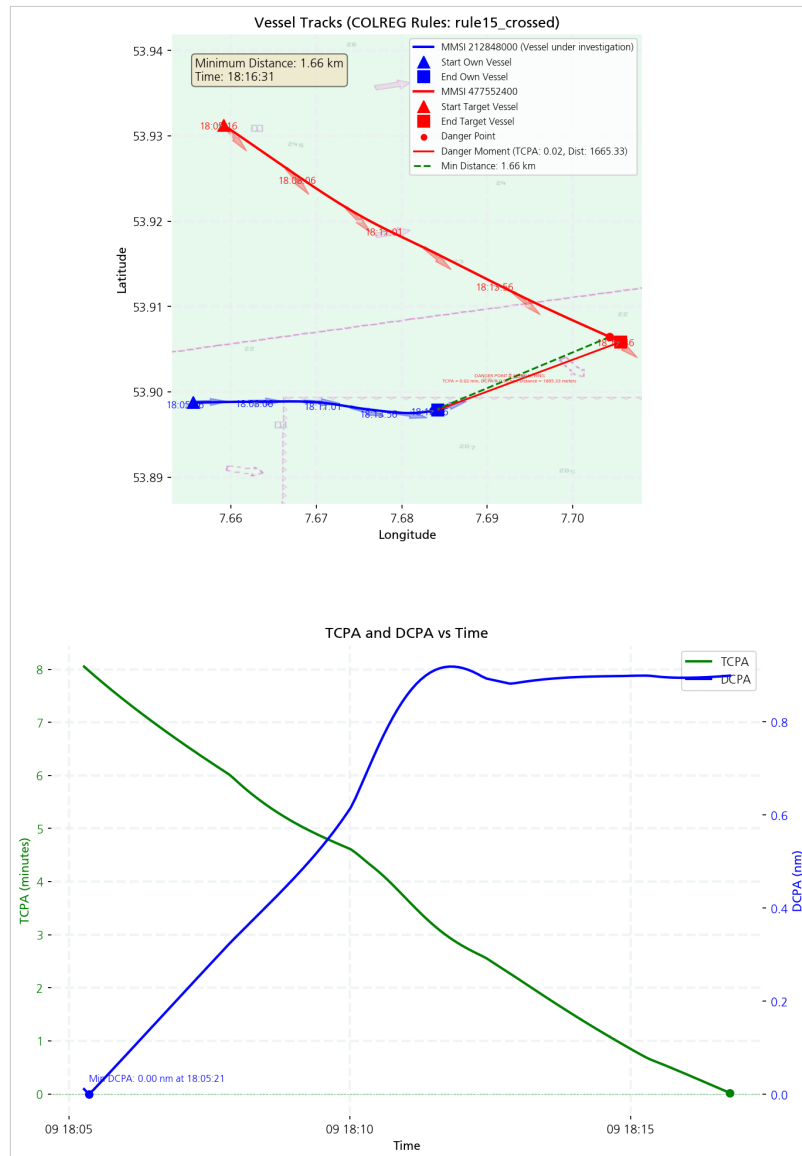
### Non-compliant Encounter #4 (Target Ship Fault)



<b>Date:</b>	212848000_2023-11-17 – 19:01
<b>Involved vessel:</b>	MMSI - 220474000, Name VINA
<b>Applicable COLREG:</b>	rule 15
<b>Our Obligation:</b>	Our role was give-way
<b>Type of breach:</b>	rule 15 violation: Stand-on vessel failing to maintain course and speed when required
<b>Fault Assignment:</b>	Target Ship

## Target Ship Fault Encounters

### Non-compliant Encounter #5 (Target Ship Fault)



<b>Date:</b>	212848000_2023-05-09 – 18:05
<b>Involved vessel:</b>	MMSI - 477552400, Name Unknown
<b>Applicable COLREG:</b>	rule 15
<b>Our Obligation:</b>	Our role was stand-on
<b>Type of breach:</b>	rule 15 violation: Give-way vessel failing to take early and substantial action to keep clear
<b>Fault Assignment:</b>	Target Ship